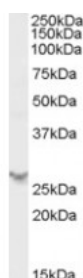




## PSME2 Antibody

CATALOG NUMBER: 46-239



Western Blot (0.5ug/ml) staining of Human Spleen lysate (35ug protein in RIPA buffer). Primary incubation was 1 hour. Detected by chemiluminescence.

### Specifications

#### SPECIES REACTIVITY:

#### TESTED APPLICATIONS:

**APPLICATIONS:** ELISA: antibody detection limit dilution 1:32000. Western Blot: Approx 27kDa band observed in Human Spleen lysates (calculated MW of 27.4kDa according to NP\_002809.2). Recommended concentration: 0.5-1ug/ml.

**POSITIVE CONTROL:** 1) Cat. No. 1306 - Human Spleen Tissue Lysate

**IMMUNOGEN:** PSME2 antibody was raised against a 14 amino acid synthetic peptide near the C-Terminus of PSME2.

**HOST SPECIES:** Goat

### Properties

**PURIFICATION:** PSME2 antibody was purified from goat serum by ammonium sulphate precipitation followed by antigen affinity chromatography using the immunizing peptide.

**PHYSICAL STATE:** Liquid

**BUFFER:** PSME2 antibody is supplied in Tris saline, 0.02% sodium azide, pH 7.3 with 0.5% bovine serum albumin.

**CONCENTRATION:** 500 ug/mL

**STORAGE CONDITIONS:** Aliquot and store at -20°C. Minimize freezing and thawing.

**CLONALITY:** Polyclonal

**CONJUGATE:** Unconjugated

### Additional Info

**ALTERNATE NAMES:** PSME2, proteasome (prosome, macropain) activator subunit 2 (PA28 beta), PA28B, PA28beta, REGbeta, 11S regulator complex beta subunit, MCP activator, 31-kD subunit, activator of multicatalytic protease subunit 2, cell migration-inducing protein 22, proteasome activator 28-beta, proteasome activator hPA28 subunit beta, proteasome activator subunit 2

**ACCESSION NO.:** NP\_002809.2

**PROTEIN GI NO.:** 30410792

**OFFICIAL SYMBOL:** PSME2

---

**GENE ID:** 5721

---

**Background**

**REFERENCES:** 1) Brychcy M, Kuckelkorn U, Hausdorf G, Egerer K, Kloetzel PM, Burmester GR, Feist E. Anti-20S proteasome autoantibodies inhibit proteasome stimulation by proteasome activator PA28. Arthritis Rheum. 2006 Jul;54(7):2175-83.

---

**FOR RESEARCH USE ONLY**

December 13, 2016