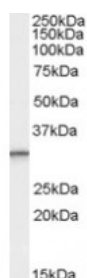




## PSME1 Antibody

CATALOG NUMBER: 46-238



Western Blot (0.3ug/ml) staining of Human Peripheral Blood Mononucleocyte lysate (35ug protein in RIPA buffer). Primary incubation was 1 hour. Detected by chemiluminescence.

### Specifications

<b>SPECIES REACTIVITY:</b>	Human
<b>TESTED APPLICATIONS:</b>	ELISA, WB
<b>APPLICATIONS:</b>	ELISA: antibody detection limit dilution 1:64000. Western Blot: Approx 30kDa band observed in Human Lymph Node, Spleen, Tonsil and Peripheral Blood Mononucleocyte lysates (calculated MW of 28.7kDa according to NP_006254.1). Recommended concentration: 0.3-1ug/ml.
<b>POSITIVE CONTROL:</b>	1) Cat. No. 1371 - Human peripheral blood leukocyte (PBL) Lysate
<b>SPECIFICITY:</b>	This antibody is expected to recognise isoform 1 (NP_006254.1).
<b>IMMUNOGEN:</b>	PSME1 antibody was raised against a 14 amino acid synthetic peptide near the C-Terminus of PSME1.
<b>HOST SPECIES:</b>	Goat

### Properties

<b>PURIFICATION:</b>	PSME1 antibody was purified from goat serum by ammonium sulphate precipitation followed by antigen affinity chromatography using the immunizing peptide.
<b>PHYSICAL STATE:</b>	Liquid
<b>BUFFER:</b>	PSME1 antibody is supplied in Tris saline, 0.02% sodium azide, pH 7.3 with 0.5% bovine serum albumin.
<b>CONCENTRATION:</b>	500 ug/mL
<b>STORAGE CONDITIONS:</b>	Aliquot and store at -20°C. Minimize freezing and thawing.
<b>CLONALITY:</b>	Polyclonal
<b>CONJUGATE:</b>	Unconjugated

### Additional Info

<b>ALTERNATE NAMES:</b>	PSME1, proteasome (prosome, macropain) activator subunit 1 (PA28 alpha), IFI5111, MGC8628, PA28A, PA28alpha, REGalpha, 11S regulator complex alpha subunit, 29-kD MCP activator subunit, activator of multicatalytic protease subunit 1, interferon gamma up-regulated I-5111 protein, interferon-gamma IEF SSP 5111, interferon-gamma-inducible protein 5111, proteasome activator subunit 1, proteasome activator subunit-1
-------------------------	---

ACCESSION NO.: NP\_006254.1

PROTEIN GI NO.: 5453990

OFFICIAL SYMBOL: PSME1

GENE ID: 5720

### Background

**REFERENCES:** 1) Brychcy M, Kuckelkorn U, Hausdorf G, Egerer K, Kloetzel PM, Burmester GR, Feist E. Anti-20S proteasome autoantibodies inhibit proteasome stimulation by proteasome activator PA28. Arthritis Rheum. 2006 Jul;54(7):2175-83.

FOR RESEARCH USE ONLY

December 13, 2016