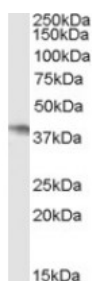


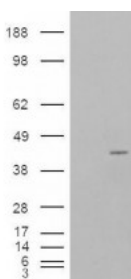


NCF4 Antibody

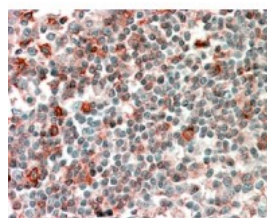
CATALOG NUMBER: 45-937



Western Blot (0.5ug/ml) staining of Daudi cell lysate (35ug protein in RIPA buffer). Primary incubation was 1 hour. Detected by chemiluminescence.



HEK293 overexpressing P40PHOX and probed with antibody (mock transfection in first lane).



Immunohistochemistry (2.5ug/ml) staining of paraffin embedded Human Tonsil. Steamed antigen retrieval with citrate buffer pH 6, AP-staining.

Specifications

SPECIES REACTIVITY:	Human
TESTED APPLICATIONS:	ELISA, IHC-P, WB
APPLICATIONS:	ELISA: antibody detection limit dilution 1:32000. Western Blot: Approx. 38kDa band observed in lysates of cell line Daudi (calculated MW of 39.0kDa according to NP_000622.2 and 38.8kDa according to NP_038202.1). In transfected HEK293 transiently expressing P40PHOX a band of approx. 42kDa is observed. Th Immunohistochemistry: In paraffin embedded Human Tonsil shows staining of the cytoplasm in some cells. Recommended concentration, 2-4ug/ml.
POSITIVE CONTROL:	1) Cat. No. 1224 - Daudi Cell Lysate
SPECIFICITY:	This antibody is expected to recognise both reported isoforms (NP_000622.2 and NP_038202.1).
IMMUNOGEN:	NCF4 antibody was raised against an 11 amino acid synthetic peptide near the internal region of NCF4.
HOST SPECIES:	Goat

Properties

PURIFICATION:	NCF4 antibody was purified from goat serum by ammonium sulphate precipitation followed by antigen affinity chromatography using the immunizing peptide.
PHYSICAL STATE:	Liquid
BUFFER:	NCF4 antibody is supplied in Tris saline, 0.02% sodium azide, pH 7.3 with 0.5% bovine serum albumin.
CONCENTRATION:	500 ug/mL
STORAGE CONDITIONS:	Aliquot and store at -20°C. Minimize freezing and thawing.
CLONALITY:	Polyclonal
CONJUGATE:	Unconjugated

Additional Info

ALTERNATE NAMES:	NCF4, neutrophil cytosolic factor 4, 40 kDa, CTA-833B7.1, MGC3810, NCF, P40PHOX, SH3PXD4, OTTHUMP00000028736, OTTHUMP00000043756, neutrophil NADPH oxidase factor 4, neutrophil cytosol factor 4, neutrophil cytosolic factor 4 (40kD)
-------------------------	--

ACCESSION NO.: NP_000622.2, NP_038202.1

PROTEIN GI NO.: 47519798

OFFICIAL SYMBOL: NCF4

GENE ID: 4689

Background

REFERENCES: 1) Rioux JD, Xavier RJ, Taylor KD, Silverberg MS, Goyette P, Huett A, Green T, Kuballa P, Barmada MM, Datta LW, Shugart YY, Griffiths AM, Targan SR, Ippoliti AF, Bernard EJ, Mei L, Nicolae DL, Regueiro M, Schumm LP, Steinhardt AH, Rotter JI, Duerr RH, Cho JH, Daly MJ, Brant SR. Genome-wide association study identifies new susceptibility loci for Crohn disease and implicates autophagy in disease pathogenesis. Nat Genet. 2007 May;39(5):596-604. Epub 2007 Apr 15.

FOR RESEARCH USE ONLY

December 13, 2016