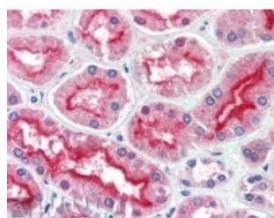




MRIP1 Antibody

CATALOG NUMBER: 45-902



Immunohistochemistry (5ug/ml) staining of
paraffin embedded Human Kidney.
Steamed antigen retrieval with citrate
buffer pH 6, AP-staining.

Specifications

SPECIES REACTIVITY:	Human
TESTED APPLICATIONS:	ELISA, IHC-P
APPLICATIONS:	ELISA: antibody detection limit dilution 1:32000. Western Blot: Preliminary experiments gave an approx 45kDa band in Human Brain and Human Liver lysates at 1ug/ml. This band was successfully blocked by incubation with the immunising peptide. Please note that currently we cannot find an explanation in th Immunohistochemistry: In paraffin embedded Human Kidney shows strong staining of brush borders in Proximal Convoluted tubules. Recommended concentration, 5-10ug/ml.
POSITIVE CONTROL:	1) Cat. No. 1305 - Human Kidney Tissue Lysate 2) Cat. No. 10-401 - Human Kidney Tissue Slide
IMMUNOGEN:	MRIP1 antibody was raised against a 13 amino acid synthetic peptide near the C-Terminus of MRIP1.
HOST SPECIES:	Goat

Properties

PURIFICATION:	MRIP1 antibody was purified from goat serum by ammonium sulphate precipitation followed by antigen affinity chromatography using the immunizing peptide.
PHYSICAL STATE:	Liquid
BUFFER:	MRIP1 antibody is supplied in Tris saline, 0.02% sodium azide, pH 7.3 with 0.5% bovine serum albumin.
CONCENTRATION:	500 ug/mL
STORAGE CONDITIONS:	Aliquot and store at -20°C. Minimize freezing and thawing.
CLONALITY:	Polyclonal
CONJUGATE:	Unconjugated

Additional Info

ALTERNATE NAMES:	CENTG3, centaurin, gamma 3, MRIP-1, MRIP-1 protein, CENTG3
ACCESSION NO.:	NP_114152
PROTEIN GI NO.:	110227613

OFFICIAL SYMBOL:	AGAP3
GENE ID:	116988

Background

REFERENCES: 1) Surks HK, Richards CT, Mendelsohn ME. Myosin phosphatase-Rho interacting protein. A new member of the myosin phosphatase complex that directly binds RhoA. J Biol Chem. 2003 Dec 19;278(51):51484-93. Epub 2003 Sep 23.

FOR RESEARCH USE ONLY

December 13, 2016