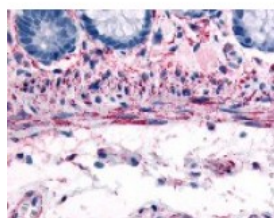




## ADRA1B Antibody

CATALOG NUMBER: 48-310



Immunohistochemistry staining of  
ADRA1B in smooth muscle cells using  
ADRA1B Antibody.

### Specifications

<b>SPECIES REACTIVITY:</b>	Gorilla, Human
<b>TESTED APPLICATIONS:</b>	ELISA, IHC
<b>APPLICATIONS:</b>	ADRA1B antibody can be used in immunohistochemistry starting at 2 ug/mL.
<b>USER NOTE:</b>	Optimal dilutions for each application to be determined by the researcher.
<b>SPECIFICITY:</b>	BLAST analysis of the peptide immunogen showed no homology with other human proteins.
<b>IMMUNOGEN:</b>	ADRA1B antibody was raised against a peptide located in the C-Terminal cytoplasmic domain of ADRA1B (Human).
<b>HOST SPECIES:</b>	Rabbit

### Properties

<b>PURIFICATION:</b>	Immunoaffinity Chromatography
<b>PHYSICAL STATE:</b>	Liquid
<b>BUFFER:</b>	PBS, 0.1% sodium azide.
<b>STORAGE CONDITIONS:</b>	ADRA1B antibody should be stored long term (months) at -80 °C and short term (days) at 4 °C. As with all antibodies avoid freeze/thaw cycles.
<b>CLONALITY:</b>	Polyclonal
<b>CONJUGATE:</b>	Unconjugated

### Additional Info

<b>ALTERNATE NAMES:</b>	ADRA1B, Alpha 1b, Alpha-1B adrenergic receptor, Alpha-1b-adrenergic, Alpha-1B-adrenergic receptor, Alpha1b, Adrenoceptor alpha 1B, Alpha-1B adrenoreceptor, Alpha1B-AR, Alpha1beta-AR, ALPHA1BAR, ADRA1, Alpha-1B adrenoceptor, Alpha1b-adrenergic
<b>ACCESSION NO.:</b>	P35368
<b>PROTEIN GI NO.:</b>	116241241
<b>OFFICIAL SYMBOL:</b>	ADRA1B
<b>GENE ID:</b>	147

## Background

**BACKGROUND:** The alpha-1b adrenoceptor is an Adrenergic Receptor that causes contraction of smooth muscle cells and thereby controls vascular tone, blood pressure, and accelerates the development of atherosclerosis. Decreased alpha-1b adrenoceptor is associated with benign prostatic hyperplasia (BPH). This adrenergic receptor also acts as a proto-oncogene when transfected into cell lines where constitutive activation of the receptor induces neoplastic transformation.

---

**FOR RESEARCH USE ONLY**

December 13, 2016