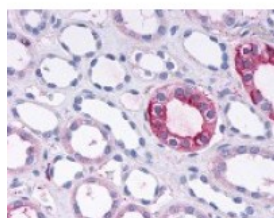




GPR108 Antibody

CATALOG NUMBER: 48-147



Immunohistochemistry staining of
GPR108 in kidney tissue using GPR108
Antibody.

Specifications

| | |
|-----------------------------|--|
| SPECIES REACTIVITY: | Gorilla, Human |
| TESTED APPLICATIONS: | IHC |
| APPLICATIONS: | GPR108 antibody can be used in Western Blot, and immunohistochemistry starting at 1:100. |
| USER NOTE: | Optimal dilutions for each application to be determined by the researcher. |
| SPECIFICITY: | BLAST analysis of the peptide immunogen showed no homology with other human proteins. |
| IMMUNOGEN: | GPR108 antibody was raised against a peptide located in the N-Terminal extracellular domain of GPR108 (Human). |
| HOST SPECIES: | Rabbit |

Properties

| | |
|----------------------------|---|
| PURIFICATION: | Immunoaffinity Chromatography |
| PHYSICAL STATE: | Liquid |
| BUFFER: | PBS, 0.1% sodium azide. |
| STORAGE CONDITIONS: | GPR108 antibody should be stored long term (months) at -80 °C and short term (days) at 4 °C. As with all antibodies avoid freeze/thaw cycles. |
| CLONALITY: | Polyclonal |
| CONJUGATE: | Unconjugated |

Additional Info

| | |
|-------------------------|--|
| ALTERNATE NAMES: | GPR108, G protein-coupled receptor 108, LUSTR2, Protein GPR108 |
| ACCESSION NO.: | Q9NPR9 |
| PROTEIN GI NO.: | 296439338 |
| OFFICIAL SYMBOL: | GPR108 |
| GENE ID: | 56927 |

Background

BACKGROUND: LUSTER2 is an Orphan-U GPCR with an unknown ligand.

FOR RESEARCH USE ONLY

December 13, 2016