

**Name: Rabbit polyclonal anti-GluR6 antibody**  
**Product Data Sheet - ANTIBODY****Catalog: TA313975**

<b>Components:</b>	<ul style="list-style-type: none"><li>• Rabbit polyclonal anti-GluR6 antibody (TA313975)</li><li>• 1 vial of 20ug myc-DDK tagged GRM6 HEK293T over-expression lysate lyophilized in RIPA buffer (LC424487). (Reconstitute into 20ul of 1x SDS sample buffer before loading; load 5ul per lane as WB control or as desired)</li></ul>
<b>Amount:</b>	100ul
<b>Immunogen:</b>	The antiserum was produced against synthesized peptide derived from human GluR6.
<b>Host:</b>	Rabbit
<b>Isotype:</b>	IgG
<b>Species Reactivity:</b>	Human
<b>Guaranteed Applications:</b>	WB, IHC
<b>Suggested Dilutions:</b>	WB: 500~1:1000, IHC: 1:50~1:100, ELISA: 1:5000
<b>Concentration:</b>	0.5mg/ml
<b>Buffer:</b>	Phosphate buffered saline (without Mg <sup>2+</sup> and Ca <sup>2+</sup> ), pH 7.4, 150mM NaCl, 0.02% sodium azide and 50% glycerol.
<b>Purification:</b>	The antibody was affinity-purified from rabbit antiserum by affinity-chromatography using epitope-specific immunogen.
<b>Storage Condition:</b>	Shipped at -20C. Upon delivery store at -20C. Dilute in PBS (pH7.3) if necessary. Stable for 12 months from date of receipt. Avoid repeated freeze-thaws.

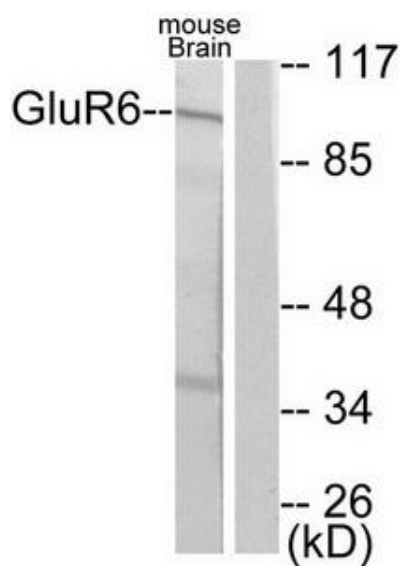
## Target

<b>Target Name:</b>	Homo sapiens glutamate receptor, metabotropic 6 (GRM6)
<b>Alternative Name:</b>	CSNB1B; GPRC1F; mGlu6; MGLUR6
<b>Database Link:</b>	NP_000834
<b>Function:</b>	

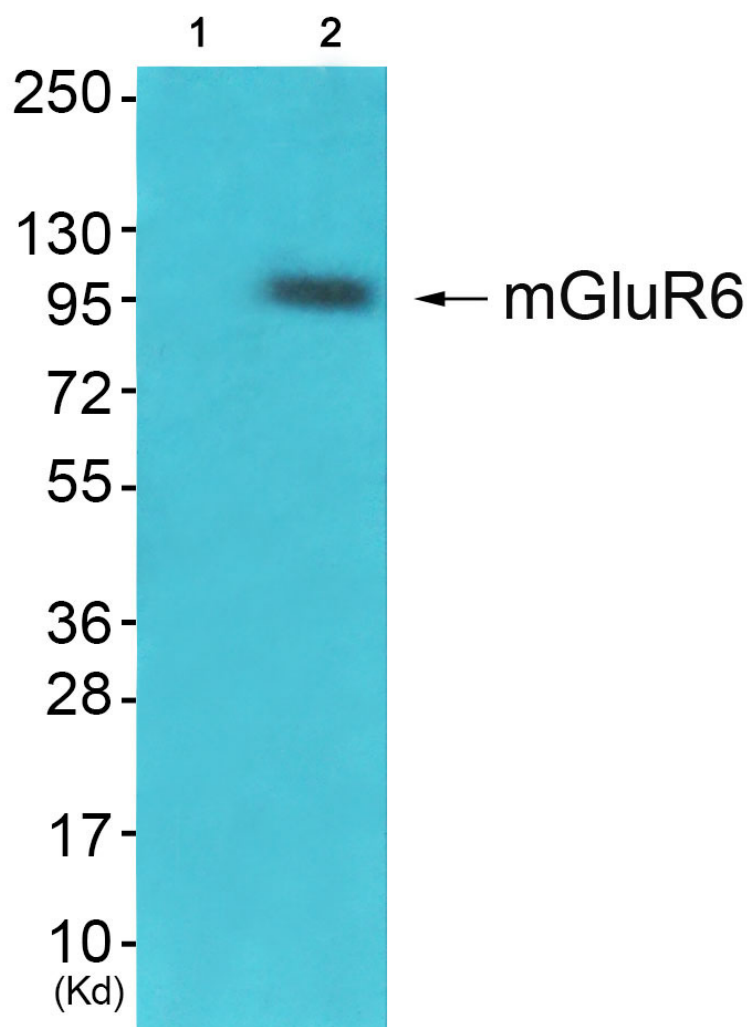
***This product is to be used for laboratory only. Not for diagnostic or therapeutic use.***

© 2014 OriGene Technologies, Inc. 9620 Medical Center Dr., Suite 200, Rockville, MD 20850

Validation Data

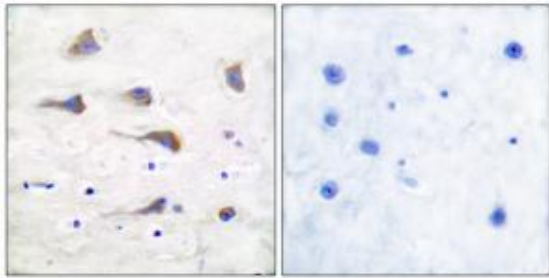


Western blot analysis of extracts from mouse brain, using GluR6 antibody (#TA313975).The lane on the right is treated with the synthesized peptide.



Western blot analysis of extracts from HepG2 cells (Lane 2), using mGluR6 Antibody. The lane on the left is treated with synthesized peptide.

Immunohistochemical analysis of paraffin-embedded human



brain tissue using GluR6 antibody (#TA313975).The picture on the right is treated with the synthesized peptide.

\* More validation images may be available on our website: <http://www.origene.com/antibody/TA313975.aspx>

---

***This product is to be used for laboratory only. Not for diagnostic or therapeutic use.***

© 2014 OriGene Technologies, Inc. 9620 Medical Center Dr., Suite 200, Rockville, MD 20850

---