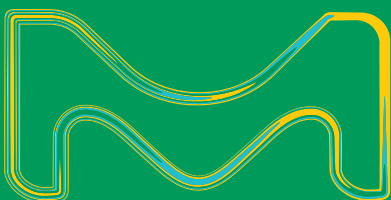


MERCK

At any stage of
your process...
we can support you!

Individual products and tailor-made
chemicals for your technical applications



VWR®
We Enable Science

WHO WE ARE ...

With a large catalog of products, our Life Science business delivers many of the most highly-respected brands in the industry. Our offering covers every step of the production chain, creating a complete end-to-end workflow. Our innovative portfolio and industry leading capabilities, uniquely positions us to anticipate and deliver your needs.

... AND HOW CAN WE SUPPORT YOU?

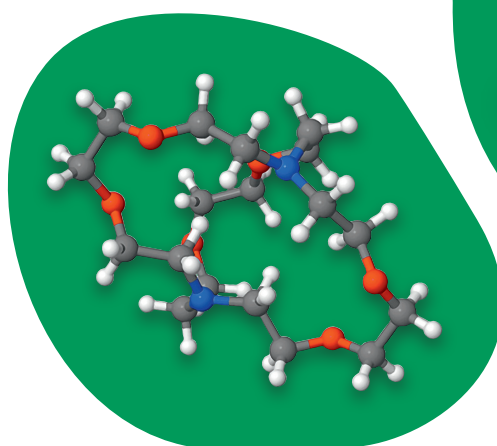
Optimizing the cost of your supply chain cannot be achieved by optimizing raw material cost alone. We can help you to reduce your overall expenses by chemicals closely geared to your process and convenient to use.

Merck offers individual products and tailor-made chemicals for your technical application.

PRODUCTION AND R&D

Customized Products for Organic Synthesis

Select from an extensive portfolio of more than 5,000 building blocks. Specify the parameters and their values you require for your application. Order convenient pre-treatment options such as solving or mixing. And receive the exact amount you need in the most suitable packaging.



| Product Examples for Organic Synthesis | Ord. No. |
|---|--------------|
| Methyl Vinyl Ketone (stabilised) for synthesis | 8.05901.9030 |
| Kryprofix 222 for synthesis | 8.10647.0500 |
| Tween® 80 (Polysorbate) suitable for use as excipient EMPROVE® exp Ph Eur, JP, NF | 8.17061.9010 |
| Tween® 20 for synthesis | 8.22184.1000 |
| Phosphoryl Chloride for synthesis | 8.22339.1000 |
| Tetrahydrofurfuryl Alcohol Polyethylene Glycol ether for synthesis | 8.21092.9010 |
| Diisopropylamine for synthesis | 8.03646.1000 |
| N-(3-Dimethylaminopropyl)-N"-ethylcarbodiimide hydrochloride for synthesis | 8.00907.9999 |
| Sodium Formaldehydes | 8.17068.9025 |

Reduce costs and waste:

- Save time and effort
- Minimize health risks
- Simplify scale-up
- Ensure that your exact requirements are met

PRODUCTION

EMSURE® products in bigger pack sizes

EMSURE® solvents, acids, caustic alkalis and bases mean:

- Low trace impurities
- High purity
- Low evaporation residue

... and so those products are perfectly suitable for high quality demanding application in technical industry.

Your benefits with EMSURE® products:

- Extremely good impurity profile
- Worldwide availability
- Comprehensive documentation
- Convenient and safe packaging
- Corresponding withdrawal systems





| Product | Content | Packaging | Ord. No. |
|---|---------|----------------------|--------------|
| Solvents EMSURE® | | | |
| Acetone for analysis EMSURE® ACS, ISO, Reag. Ph Eur | 10 l | Stainless steel drum | 1.00014.6010 |
| | 25 l | Stainless steel drum | 1.00014.6025 |
| | 180 l | Metal drum | 1.00014.9180 |
| Chloroform for analysis EMSURE® ACS, ISO, Reag. Ph Eur | 10 l | Stainless steel drum | 1.02445.6010 |
| | 25 l | Stainless steel drum | 1.02445.6025 |
| | 190 l | Metal drum | 1.02445.9180 |
| Dichloromethane for analysis EMSURE® ACS, ISO, Reag. Ph Eur | 10 l | Stainless steel drum | 1.06050.6010 |
| | 25 l | Metal drum | 1.06050.9025 |
| | 190 l | Metal drum | 1.06050.9180 |
| Ethanol absolute for analysis EMSURE® ACS, ISO, Reag. Ph Eur | 10 l | Stainless steel drum | 1.00983.6010 |
| | 25 l | Stainless steel drum | 1.00983.6025 |
| | 180 l | Metal drum | 1.00983.9180 |
| n-Heptane for analysis EMSURE® Reag. Ph Eur | 10 l | Stainless steel drum | 1.04379.6010 |
| | 25 l | Stainless steel drum | 1.04379.6025 |
| | 190 l | Metal drum | 1.04379.9190 |
| Methanol for analysis EMSURE® ACS, ISO, Reag. Ph Eur | 10 l | Stainless steel drum | 1.06009.6010 |
| | 25 l | Stainless steel drum | 1.06009.6025 |
| | 180 l | Metal drum | 1.06009.9180 |
| n-Pentane for analysis EMSURE® | 10 l | Stainless steel drum | 1.07177.6010 |
| | 190 l | Metal drum | 1.07177.9190 |
| 2-Propanol for analysis EMSURE® ACS, ISO, Reag. Ph Eur | 10 l | Stainless steel drum | 1.09634.6010 |
| | 25 l | Metal drum | 1.09634.9025 |
| | 180 l | Metal drum | 1.09634.9180 |
| Acids EMSURE® | | | |
| Hydrochloric acid 25 % for analysis EMSURE® | 25 l | Plastic container | 1.00316.9025 |
| Nitric acid 65 % for analysis EMSURE® ISO | 25 l | PE/Metal drum | 1.00456.9026 |
| | 180 l | PE/Metal drum | 1.00456.9180 |
| ortho-Phosphoric acid 85 % for analysis EMSURE® ACS, ISO, Reag. Ph Eur | 25 l | Plastic container | 1.00573.9025 |
| | 200 l | PE drum | 1.00573.9200 |
| Sulfuric acid 95–97 % for analysis EMSURE® ISO | 25 l | Plastic container | 1.00731.9025 |
| | 200 l | PE drum | 1.00731.9201 |
| Caustics and bases EMSURE® | | | |
| Potassium hydroxide pellets for analysis EMSURE® | 25 kg | Fibre carton | 1.05033.9025 |
| | 50 kg | Fibre carton | 1.05033.9050 |
| Potassium hydroxide solution 47 % for analysis EMSURE® | 25 l | Plastic container | 1.05545.9025 |
| Sodium hydroxide pellets for analysis (max. 0.02 % K) EMSURE® ACS, Reag. Ph Eur | 5 kg | Plastic bottle | 1.06469.5000 |
| | 50 kg | Fibre carton | 1.06469.9050 |
| Sodium hydroxide solution 50 % for analysis EMSURE® | 25 l | Plastic container | 1.58793.9025 |
| | 200 l | PE drum | 1.58793.9200 |

Additional pack sizes and products are available depending on your need. Please contact your local VWR organization for more information or have a look at our brochures:

- Empower your lab (201603.014.pronet)
- Accuracy you can count on (W.282105)
- Perfection in every dimension – Inorganic Reagents catalog (W.281150)
- Safety connects. Your direct connection to maximum safety in daily solvent handling. (W.282133)



QUALITY CONTROL

EMSURE® acids, salts and solvents for your Quality Control

Your benefits:

Accuracy and reliability – Absolute trust – Every time

- Unmatched batch-to-batch consistency
- Reliable and reproducible results
- Lower analytical costs
- No repeat analyses

Convenience and safety – Packed with innovation

- Packaging is always compatible with the product
- Safe and convenient handling, storage and transportation
- Optimal protection of chemicals and reagents from contamination
- Wide choice of packaging materials and sizes

Regulatory compliance – Specified beyond standards

- Compliance with ISO 6353, ACS, Reag. Ph Eur
- Most products' specifications exceed international standards



| Product | Content | Packaging | Ord. No. | Content | Packaging | Ord. No. |
|--|---------|--------------|--------------|---------|--------------|--------------|
| Solvents EMSURE® | | | | | | |
| Acetone for analysis EMSURE® ACS, ISO, Reag. Ph Eur | 1 l | Glass bottle | 1.00014.1000 | 1 l | HDPE bottle | 1.00014.1011 |
| | 2.5 l | Glass bottle | 1.00014.2500 | 2.5 l | HDPE bottle | 1.00014.2511 |
| | 4 l | Glass bottle | 1.00014.4000 | 5 l | HDPE bottle | 1.00014.5000 |
| Chloroform for analysis EMSURE® ACS, ISO, Reag. Ph Eur | 1 l | Glass bottle | 1.02445.1000 | 2.5 l | Glass bottle | 1.02445.2500 |
| | 4 l | Glass bottle | 1.02445.4000 | | | |
| Dichloromethane for analysis EMSURE® ACS, ISO, Reag. Ph Eur | 1 l | Glass bottle | 1.06050.1000 | 2.5 l | Glass bottle | 1.06050.2500 |
| | 4 l | Glass bottle | 1.06050.4000 | | | |
| Diethyl ether for analysis EMSURE® ACS, ISO, Reag. Ph Eur | 1 l | Glass bottle | 1.00921.1000 | 2.5 l | Glass bottle | 1.00921.2500 |
| | 4 l | Glass bottle | 1.00921.4000 | 5 l | Alu bottle | 1.00921.5000 |
| Ethanol absolute for analysis EMSURE® ACS, ISO, Reag. Ph Eur | 1 l | Glass bottle | 1.00983.1000 | 1 l | HDPE bottle | 1.00983.1011 |
| | 2.5 l | Glass bottle | 1.00983.2500 | 2.5 l | HDPE bottle | 1.00983.2511 |
| | 4 l | Glass bottle | 1.00983.4000 | 5 l | HDPE bottle | 1.00983.5000 |
| Ethanol denatured with about 1% Methyl ethyl ketone for analysis EMSURE® | 1 l | HDPE bottle | 1.00974.1011 | 4 l | Glass bottle | 1.00974.4000 |
| | 2.5 l | Glass bottle | 1.00974.2500 | 2.5 l | HDPE bottle | 1.00974.2511 |
| n-Hexane for analysis EMSURE® ACS | 1 l | Glass bottle | 1.04367.1000 | 2.5 l | HDPE bottle | 1.04367.2511 |
| | 2.5 l | Glass bottle | 1.04367.2500 | | | |
| Isooctane for analysis EMSURE® ACS, Reag. Ph Eur | 1 l | Glass bottle | 1.04727.1000 | 4 l | Glass bottle | 1.04727.4000 |
| | 2.5 l | Glass bottle | 1.04727.2500 | | | |
| Methanol for analysis EMSURE® ACS, ISO, Reag. Ph Eur | 1 l | Glass bottle | 1.06009.1000 | 1 l | HDPE bottle | 1.06009.1011 |
| | 2.5 l | Glass bottle | 1.06009.2500 | 2.5 l | HDPE bottle | 1.06009.2511 |
| | 4 l | Glass bottle | 1.06009.4000 | 5 l | HDPE bottle | 1.06009.5000 |
| 2-Propanol for analysis EMSURE® ACS, ISO, Reag. Ph Eur | 1 l | Glass bottle | 1.09634.1000 | 1 l | HDPE bottle | 1.09634.1011 |
| | 2.5 l | Glass bottle | 1.09634.2500 | 2.5 l | HDPE bottle | 1.09634.2511 |
| | 4 l | Glass bottle | 1.09634.4000 | 5 l | HDPE bottle | 1.09634.5000 |



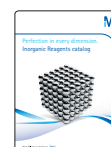
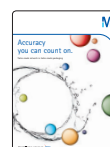
All EMSURE® products are made from high-quality raw materials in our state-of-the-art production facilities, then tested for up to 70 parameters at our stringent quality control labs in Darmstadt, Germany. This results in outstanding chemical purity and extremely low limiting values.

| Product | Content | Packaging | Ord. No. | Content | Packaging | Ord. No. |
|---|---------|---------------------------|--------------|---------|--------------|--------------|
| Acids EMSURE® | | | | | | |
| Acetic acid (glacial) 100 % anhydrous for analysis EMSURE® ACS, ISO, Reag. Ph Eur | 1 l | Glass bottle | 1.00063.1000 | 1 l | HDPE bottle | 1.00063.1011 |
| | 2.5 l | Glass bottle | 1.00063.2500 | 2.5 l | HDPE bottle | 1.00063.2511 |
| | 2.5 l | Safebreak bottle | 1.00063.2510 | | | |
| Hydrochloric acid fuming 37 % for analysis EMSURE® ACS, ISO, Reag. Ph Eur | 1 l | Glass bottle | 1.00317.1000 | 1 l | HDPE bottle | 1.00317.1011 |
| | 2.5 l | Glass bottle | 1.00317.2500 | 2.5 l | HDPE bottle | 1.00317.2501 |
| | 2.5 l | Safebreak bottle | 1.00317.2510 | | | |
| Hydrogen peroxide 30 % (Perhydrol®) for analysis EMSURE® ISO | 250 ml | HDPE bottle | 1.07209.0250 | 500 ml | HDPE bottle | 1.07209.0500 |
| | 1 l | HDPE bottle | 1.07209.1000 | 2.5 l | HDPE bottle | 1.07209.2500 |
| Nitric acid 65 % for analysis EMSURE® ISO | 1 l | Glass bottle | 1.00456.1000 | 2.5 l | Glass bottle | 1.00456.2500 |
| | 2.5 l | Safebreak bottle | 1.00456.2510 | | | |
| Nitric acid fuming 100 % for analysis EMSURE® Reag. Ph Eur | 1 l | Glass bottle pl. coat. | 1.00455.1000 | | | |
| ortho-Phosphoric acid 85 % for analysis EMSURE® ACS, ISO, Reag. Ph Eur | 1 l | HDPE bottle | 1.00573.1000 | 2.5 l | HDPE bottle | 1.00573.2500 |
| | 2.5 l | Safebreak bottle | 1.00573.2510 | | | |
| Sulfuric acid 25 % for analysis EMSURE® | 1 l | HDPE bottle | 1.00716.1000 | | | |
| Sulfuric acid 95–97 % for analysis EMSURE® ISO | 1 l | Glass bottle | 1.00731.1000 | 1 l | HDPE bottle | 1.00731.1011 |
| | 2.5 l | Glass bottle | 1.00731.2500 | 2.5 l | HDPE bottle | 1.00731.2511 |
| | 2.5 l | Safebreak bottle | 1.00731.2510 | | | |
| Salts EMSURE® | | | | | | |
| Potassium chloride for analysis EMSURE® | 500 g | HDPE bottle | 1.04936.0500 | 1 kg | HDPE bottle | 1.04936.1000 |
| | 5 kg | HDPE bottle | 1.04936.5000 | | | |
| Potassium dihydrogen phosphate for analysis EMSURE® ISO | 250 g | HDPE bottle | 1.04873.0250 | 1 kg | HDPE bottle | 1.04873.1000 |
| | 5 kg | HDPE bottle | 1.04873.5000 | | | |
| Potassium iodide for analysis EMSURE® ISO, Reag. Ph Eur | 250 g | HDPE bottle | 1.05043.0250 | 500 g | HDPE bottle | 1.05043.0500 |
| | 1 kg | HDPE bottle | 1.05043.1000 | 2.5 kg | HDPE bottle | 1.05043.2500 |
| di-Potassium hydrogen phosphate anhydrous for analysis EMSURE® | 1 kg | HDPE bottle | 1.05104.1000 | | | |
| Silver nitrate for analysis EMSURE® ACS, ISO, Reag. Ph Eur | 25 g | HDPE bottle | 1.01512.0025 | 100 g | HDPE bottle | 1.01512.0100 |
| | 250 g | HDPE bottle | 1.01512.0250 | 1 kg | HDPE bottle | 1.01512.1000 |
| Sodium chloride for analysis EMSURE® ACS, ISO, Reag. Ph Eur | 500 g | HDPE bottle | 1.06404.0500 | 1 kg | HDPE bottle | 1.06404.1000 |
| | 5 kg | HDPE bottle | 1.06404.5000 | | | |
| tri-Sodium citrate dihydrate for analysis EMSURE® ACS, ISO, Reag. Ph Eur | 500 g | HDPE bottle | 1.06448.0500 | 1 kg | HDPE bottle | 1.06448.1000 |
| | 5 kg | HDPE bottle | 1.06448.5000 | | | |
| Sodium dihydrogen phosphate monohydrate for analysis EMSURE® ACS, Reag. Ph Eur | 500 g | HDPE bottle | 1.06346.0500 | 1 kg | HDPE bottle | 1.06346.1000 |
| di-Sodium hydrogen phosphate dihydrate for analysis EMSURE® | 500 g | HDPE bottle | 1.06580.0500 | 1 kg | HDPE bottle | 1.06580.1000 |
| | 5 kg | HDPE bottle | 1.06580.5000 | | | |
| Sodium sulfate anhydrous for analysis EMSURE® ACS, ISO, Reag. Ph Eur | 500 g | HDPE bottle | 1.06649.0500 | 1 kg | HDPE bottle | 1.06649.1000 |
| | 5 kg | HDPE bottle | 1.06649.5000 | | | |



Additional pack sizes and products are available depending on your need. Please contact your local VWR organization for more information or have a look at our brochures:

- Empower your lab (201603.014.pronet)
- Accuracy you can count on (W.282105)
- Perfection in every dimension – Inorganic Reagents catalog (W.281150)
- Safety connects. Your direct connection to maximum safety in daily solvent handling (W.282133)



QUALITY CONTROL

SupraSolv®/UniSolv® Solvents for Gas Chromatography

With gas chromatography, only solvents with the highest levels of purity are suitable for sample preparation tasks such as the extraction and concentration of the extracts before injection. Our solvents are developed specially for this highly sophisticated application area.

Comprehensive application area

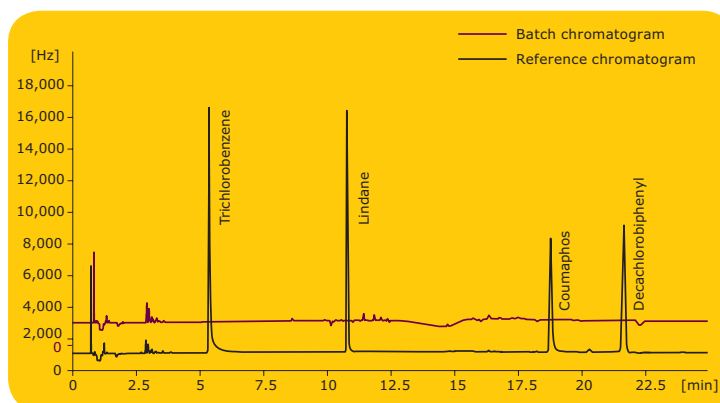
- Due to the largest retention time range

Analytical reliability

- Due to the highest possible purity and a minimal signal-to-noise ratio

Time and cost savings

- Due to the best possible batch consistency, thus avoiding analysis repetition



Pesticide analysis in waste water: GC-ECD, batch and reference chromatogram (Lindane = 3 pg/ml), n-Hexane SupraSolv® EDC and FID [Cat. No. 104371]



| Product | Content | Packaging | Ord. No. |
|--|---------|--------------|--------------|
| SupraSolv® solvents for gas chromatography ECD and FID | | | |
| Acetone for gas chromatography ECD and FID SupraSolv® | 2.5 l | Glass bottle | 1.00012.2500 |
| n-Hexane for gas chromatography ECD and FID SupraSolv® | 2.5 l | Glass bottle | 1.04371.2500 |
| Dimethyl sulfoxide for headspace gas chromatography SupraSolv® | 1 l | Glass bottle | 1.01900.1000 |
| Cyclohexane for gas chromatography ECD and FID SupraSolv® | 2.5 l | Glass bottle | 1.02817.2500 |
| Dichloromethane for gas chromatography ECD and FID SupraSolv® | 2.5 l | Glass bottle | 1.06054.2500 |
| UniSolv® solvents for organic trace analysis | | | |
| n-Pentane for organic trace analysis UniSolv® | 2.5 l | Glass bottle | 1.07288.2500 |
| n-Hexane for organic trace analysis UniSolv® | 2.5 l | Glass bottle | 1.04369.2500 |
| Dichloromethane for organic trace analysis UniSolv® | 1 l | Glass bottle | 1.06454.1000 |



Additional pack sizes and products are available depending on your need. Please contact your local VWR organization for more information or have a look at our brochures:

- Chrombook 2015 – The world of chromatography in your hands (W.282120)
- Naturally Pure. SupraSolv® and UniSolv® – high purity solvents for gas chromatography (W.282144)



QUALITY CONTROL

Certipur® | Atomic Absorption Spectroscopy

The quality control of our ICP single-element standards is carried out by the accredited calibration laboratory according to DIN EN ISO/IEC 17025. They are directly traceable to primary reference material from NIST. A Certificate of Analysis is enclosed in each package.

- ICP standards according to ISO 17025 and ISO Guide 34
- Standards are traceable to primary standards
- ICP standards with an extensive Certificate of Analysis

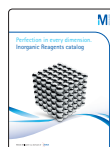


| Product | Content | Packaging | Ord. No. |
|---|---------|-------------|--------------|
| Certipur® ICP standards | | | |
| Yttrium ICP standard traceable to SRM FR | 100 ml | 1,000 mg/l | 1.70368.0100 |
| Calcium Alcium ICP standard traceable to SRM FR | 100 ml | 10,000 mg/l | 1.70373.0100 |
| Rhodium ICP standard traceable to SRM FR | 100 ml | 1,000 mg/l | 1.70345.0100 |
| Potassium ICP standard traceable to SRM | 100 ml | 10,000 mg/l | 1.70377.0100 |
| Sodium ICP standard traceable to SRM FRO | 100 ml | 10,000 mg/l | 1.70381.0100 |
| Phosphorus ICP standard traceable to SRM | 100 ml | 1,000 mg/l | 1.70340.0100 |
| Copper ICP standard traceable to SRM FRO | 100 ml | 1,000 mg/l | 1.70314.0100 |
| Aluminium ICP standard traceable to SRM | 100 ml | 1,000 mg/l | 1.70301.0100 |
| Scandium ICP standard traceable to SRM F | 100 ml | 1,000 mg/l | 1.70349.0100 |
| Platinum standard traceable to SRM F | 100 ml | 1,000 mg/l | 1.70341.0100 |



Additional pack sizes and products are available depending on your need. Please contact your local VWR organization for more information or have a look at our brochures:

- Perfection in every dimension – Inorganic Reagents catalog (W.281150)



QUALITY CONTROL AND ENVIRONMENTAL TESTING

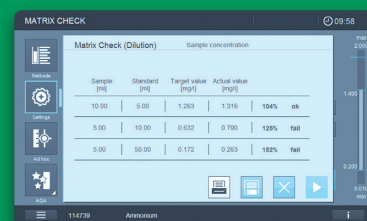
Just insert, prove and proceed

The new Spectrophotometers from Merck are designed to simplify your workflow and ensure reliable results for your water analysis.

In combination with the Spectroquant® Test Kits you can leverage the full potential of the instruments and get reliable results concerning your process water or your waste water chemicals contents.

Your benefits:

- Easy monitoring of your water quality
- Large variety of ready-to-use kits to fit with your need
- Live ID provides the method and selects the right settings
- Robust & easy to clean instrument



| Product | Packaging | Ord. No. |
|--|---------------|--------------|
| Spectroquant® Spectrophotometer | | |
| Spectroquant® Prove 600 UV/VIS spectrophotometer | 1 pcs | 1.73018.0001 |
| Spectroquant® Prove 100 VIS spectrophotometer | 1 pcs | 1.73016.0001 |
| Spectroquant® Cell Tests | | |
| SQ COD CT 25 – 1,500 mg | 25 tests/box | 1.14541.0001 |
| COD Cell Test Method: photometric 10 – 150 mg/l Spectroquant® | 25 tests/box | 1.14540.0001 |
| Silicate (Silicic Acid) Test Method: photometric 0.0005 – 0.5000 mg/l Si ₂ O ₅ Spectroquant® | 100 tests/box | 1.01813.0001 |
| Sulfate Test Method: photometric 0.50 – 50.0 mg/l SO ₄ ²⁻ Spectroquant® | 100 tests/box | 1.01812.0001 |
| COD Cell Test Method: photometric 300 – 3,500 mg/l Spectroquant® | 25 tests/box | 1.14691.0001 |
| COD Cell Test Method: photometric 500 – 10,000 mg/l Spectroquant® | 25 tests/box | 1.14555.0001 |
| Phosphate Cell Test 0.5 – 25.0 mg/l PO ₄ -P 1.5 – 76.7 mg/l PO ₄ ³⁻ 1.1 – 57.3 mg/l P ₂ O ₅ Spectroquant® | 25 tests/box | 1.14729.0001 |
| Phosphate Cell Test 0.05 – 5.00 mg/l PO ₄ -P 0.2 – 15.3 mg/l PO ₄ ³⁻ 0.11 – 11.46 mg/l P ₂ O ₅ Spectroquant® | 25 tests/box | 1.14543.0001 |
| Surfactants (anionic) Cell Test Method: photometric 0.05 – 2.00 mg/l MBAS Spectroquant® | 25 tests/box | 1.02552.0001 |
| Surfactants (nonion.) Cell Test Method: photometric 0.10 – 7.50 mg/l Triton® X-100 Spectroquant® | 25 tests/box | 1.01787.0001 |
| Ammonium Cell Test Method: photometric 4.0 – 80.0 mg/l NH ₄ -N 5.2 – 103.0 mg/l NH ₄ ⁺ Spectroquant® | 25 tests/box | 1.14559.0001 |
| Ammonium Cell Test Method: photometric 0.5 – 16.0 mg/l NH ₄ -N 0.6 – 20.6 mg/l NH ₄ ⁺ Spectroquant® | 25 tests/box | 1.14544.0001 |
| Nitrate Cell Test Method: photometric, DMP 0.5 – 25.0 mg/l NO ₃ -N 2.2 – 110.7 mg/l NO ₃ ⁻ Spectroquant® | 25 tests/box | 1.14563.0001 |
| Nitrogen (total) Cell Test Method: photometric 0.5 – 15.0 mg/l N Spectroquant® | 25 tests/box | 1.14537.0001 |
| Nitrite Cell Test Method: photometric 0.03 – 2.30 mg/l NO ₂ ⁻ 0.010 – 0.700 mg/l NO ₂ -N Spectroquant® | 25 tests/box | 1.14547.0001 |



Additional instruments and rapid tests are available depending on your need. Please contact your local VWR organization for more information or have a look at our brochures:

- Water and Food Analytics Catalogue (W.285102)
- Just Prove it. Spectroquant® Prove (W.285735)



SAFETY

Make your Lab a safer place: Solvents, acids and bases in 2.5 l HDPE bottles

Your benefits of using an HDPE bottle:

- No risk of breakage when handling hazardous or dangerous goods
- Integrated carrier handle for optimal handling
- Optimal center of gravity shift for convenient pouring
- Easy and environment-friendly disposal (no polystyrene outer packaging)
- Base of the bottle redesigned to ensure optimized stability

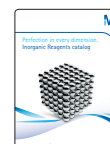


| Product | Content | Packaging | Ord. No. |
|---|--------------|-------------|--------------|
| Solvents | | | |
| Acetone for analysis EMSURE® ACS, ISO, Reag. Ph Eur | 2.5 l | HDPE bottle | 1.00014.2511 |
| Cyclohexane for analysis EMSURE® ACS, ISO, Reag. Ph Eur | 2.5 l | HDPE bottle | 1.09666.2511 |
| Dimethyl sulfoxide for analysis EMSURE® ACS | 2.5 l | HDPE bottle | 1.02952.2511 |
| Ethanol absolute for analysis EMPARTA® ACS | 2.5 l | HDPE bottle | 1.07017.2511 |
| Ethanol absolute for analysis EMSURE® ACS, ISO, Reag. Ph Eur | 2.5 l | HDPE bottle | 1.00983.2511 |
| Ethyl acetate EMPLURA® | 2.5 l | HDPE bottle | 8.22277.2500 |
| Ethyl acetate for analysis EMSURE® ACS, ISO, Reag. Ph Eur | 2.5 l | HDPE bottle | 1.09623.2511 |
| n-Heptane for analysis EMSURE® Reag. Ph Eur | 2.5 l | HDPE bottle | 1.04379.2511 |
| n-Hexane for analysis EMPARTA® ACS | 2.5 l | HDPE bottle | 1.07023.2511 |
| Methanol EMPLURA® | 2.5 l | HDPE bottle | 8.22283.2500 |
| Methanol for analysis EMSURE® ACS, ISO, Reag. Ph Eur | 2.5 l | HDPE bottle | 1.06009.2511 |
| 1-Methyl-2-pyrrolidone EMPLURA® | 2.5 l | HDPE bottle | 8.06072.2500 |
| 2-Propanol for analysis EMPARTA® ACS | 2.5 l | HDPE bottle | 1.07022.2511 |
| 2-Propanol for analysis EMSURE® ACS, ISO, Reag. Ph Eur | 2.5 l | HDPE bottle | 1.09634.2511 |
| Toluene for analysis EMSURE® ACS, ISO, Reag. Ph Eur | 2.5 l | HDPE bottle | 1.08325.2511 |
| Acids | | | |
| Acetic acid (glacial) 100 % anhydrous for analysis EMSURE® ACS, ISO, Reag. Ph Eur | 2.5 l | HDPE bottle | 1.00063.2511 |
| Acetic acid (glacial) 100 % for analysis EMPARTA® ACS | 2.5 l | HDPE bottle | 1.01830.2500 |
| Formic acid 98 – 100 % for analysis EMSURE® ACS, Reag. Ph Eur | 2.5 l | HDPE bottle | 1.00264.2511 |
| Hydrochloric acid 25 % for analysis EMSURE® | 2.5 l | HDPE bottle | 1.00316.2511 |
| Hydrochloric acid 32 % for analysis EMSURE® | 2.5 l | HDPE bottle | 1.00319.2511 |
| Hydrogen peroxide 30 % (Perhydrol®) for analysis EMSURE® ISO | 2.5 l | HDPE bottle | 1.07209.2500 |
| ortho-Phosphoric acid 85 % for analysis EMSURE® ACS, ISO, Reag. Ph Eur | 2.5 l | HDPE bottle | 1.00573.2500 |
| Sulfuric acid 95 – 97 % for analysis EMPARTA® ACS | 2.5 l | HDPE bottle | 1.01833.2500 |
| Sulfuric acid 95 – 97 % for analysis EMSURE® ISO | 2.5 l | HDPE bottle | 1.00731.2511 |
| Bases | | | |
| Sodium hydroxide solution about 32 % (for the determination of nitrogen) for analysis EMSURE® | 2.5 l | HDPE bottle | 1.05590.2500 |
| Sodium hydroxide solution about 32 % EMPLURA® | 2.5 l | HDPE bottle | 1.05587.2500 |
| Safety accessories | | | |
| Bottle key | 5 units/pack | | 1.08801.0001 |



Additional pack sizes and products are available depending on your need. Please contact your local VWR organization for more information or have a look at our brochures:

- Empower your lab (201603.014.pronet)
- Perfection in every dimension – Inorganic Reagents catalog (W.281150)
- Accuracy you can count on (W.282105)



We provide information and advice to our customers on application technologies and regulatory matters to the best of our knowledge and ability, but without obligation or liability. Existing laws and regulations are to be observed in all cases by our customers. This also applies in respect to any rights of third parties. Our information and advice do not relieve our customers of their own responsibility for checking the suitability of our products for the envisaged purpose.



For further information on Merck
and our products contact:

Merck KGaA
64293 Darmstadt, Germany
www.MERCKmillipore.com

© 2016 Merck, Darmstadt, Germany.
All rights reserved.