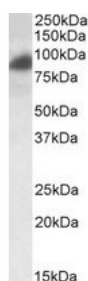




RAB11FIP1 Antibody

CATALOG NUMBER: 46-257



Western blot analysis of RAB11FIP1 in HeLa lysate (35 ug protein in RIPA buffer) using RAB11FIP1 Antibody at 0.2 ug/mL. Primary incubation was 1 hour.

Specifications

SPECIES REACTIVITY:	Human
TESTED APPLICATIONS:	ELISA, WB
APPLICATIONS:	ELISA: Antibody detection limit dilution 1:16,000. Western Blot: Approximately 110 kDa, 50 kDa and 38 kDa in human breast lysate after 1 ug/mL antibody staining. 0 kDa according to NP_079427.3, and 137 kDa according to NP_001002814.1. The detected bands were successfully blocked by incubation with the immunizing peptide (and BLAST results with the immunizing peptide sequence did not identify any other proteins to explain the additional bands). Please note that an additional 55 kDa was only partly blocked by the immunizing peptide, this band may not be specific. Approximately 80 kDa band observed in HeLa lysate (calculated MW of 71.0 kDa according to NP_079427.3). The observed molecular weight of 80 kDa corresponds to earlier findings in literature with different antibodies (Lindsay et al, J Biol Chem. 2002 Apr 5;277(14):12190-9. PMID 11786538.). Recommended concentration: 0.1-0.3 ug/mL.
SPECIFICITY:	This antibody is expected to recognize isoform 1 (NP_079427.3) and isoform 3 (NP_001002814.1).
IMMUNOGEN:	RAB11FIP1 antibody was raised against a 13 amino acid synthetic peptide near the internal region of RAB11FIP1.
HOST SPECIES:	Goat

Properties

PURIFICATION:	RAB11FIP1 antibody was purified from goat serum by ammonium sulphate precipitation followed by antigen affinity chromatography using the immunizing peptide.
PHYSICAL STATE:	Liquid
BUFFER:	RAB11FIP1 antibody is supplied in Tris saline, 0.02% sodium azide, pH 7.3 with 0.5% bovine serum albumin.
CONCENTRATION:	500 ug/mL
STORAGE CONDITIONS:	Aliquot and store at -20°C. Minimize freezing and thawing.
CLONALITY:	Polyclonal
CONJUGATE:	Unconjugated

Additional Info

ALTERNATE NAMES:	RAB11FIP1, RAB11 family interacting protein 1 (class I), HGNC:30265, FLJ22524, FLJ22622, MGC78448, NOEL1A, RCP, rab11-FIP1, Rab coupling protein, Rab effector protein, Rab-interacting recycling protein, Rab11-family interacting protein 1D, no Rab11-binding protein 1A
ACCESSION NO.:	NP_079427.3, NP_001002814.1
PROTEIN GI NO.:	50363228
OFFICIAL SYMBOL:	RAB11FIP1
GENE ID:	80223

Background

REFERENCES:	1) Garcia MJ, Pole JC, Chin SF, Teschendorff A, Naderi A, Ozdag H, Vias M, Kranjac T, Subkhankulova T, Paish C, Ellis I, Brenton JD, Edwards PA, Caldas C. A 1 Mb minimal amplicon at 8p11-12 in breast cancer identifies new candidate oncogenes. <i>Oncogene</i> . 2005 Aug 4;24(33):5235-45.
--------------------	---

FOR RESEARCH USE ONLY

December 13, 2016