

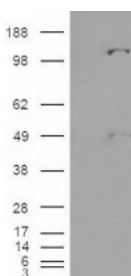


Pyruvate carboxylase Antibody

CATALOG NUMBER: 46-255



Western Blot (0.03ug/ml) staining of Mouse Liver lysate (35ug protein in RIPA buffer). Primary incubation was 1 hour. Detected by chemiluminescence.



HEK293 overexpressing Human Pyruvate Carboxylase and probed with antibody (mock transfection in first lane).

Specifications

SPECIES REACTIVITY:	Mouse
TESTED APPLICATIONS:	ELISA, WB
APPLICATIONS:	ELISA: antibody detection limit dilution 1:16000. Western Blot: Approx 150kDa band observed in Mouse Liver lysates (calculated MW of 130kDa according to NP_000911.2, NP_001035806.1 and NP_071504.2). Recommended concentration: 0.03-0.1ug/ml.
POSITIVE CONTROL:	1) Cat. No. 1404 - Mouse Liver Tissue Lysate
SPECIFICITY:	All reported variants (NP_000911.2; NP_001035806.1; NP_071504.2) represent identical protein.
IMMUNOGEN:	Pyruvate carboxylase antibody was raised against a 14 amino acid synthetic peptide near the internal region of Pyruvate carboxylase.
HOST SPECIES:	Goat

Properties

PURIFICATION:	Pyruvate carboxylase antibody was purified from goat serum by ammonium sulphate precipitation followed by antigen affinity chromatography using the immunizing peptide.
PHYSICAL STATE:	Liquid
BUFFER:	Pyruvate carboxylase antibody is supplied in Tris saline, 0.02% sodium azide, pH 7.3 with 0.5% bovine serum albumin.
CONCENTRATION:	500 ug/mL
STORAGE CONDITIONS:	Aliquot and store at -20°C. Minimize freezing and thawing.
CLONALITY:	Polyclonal
CONJUGATE:	Unconjugated

Additional Info

ALTERNATE NAMES:	PC, pyruvate carboxylase, PCB
ACCESSION NO.:	NP_000911.2, NP_001035806.1, NP_071504.2
PROTEIN GI NO.:	106049295

OFFICIAL SYMBOL:	PC
GENE ID:	5091

Background

REFERENCES: 1) St Maurice M, Reinhardt L, Surinya KH, Attwood PV, Wallace JC, Cleland WW, Rayment I. Domain architecture of pyruvate carboxylase, a biotin-dependent multifunctional enzyme. Science. 2007 Aug 24;317(5841):1076-9.

FOR RESEARCH USE ONLY

December 13, 2016