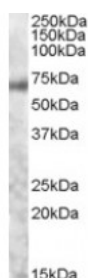


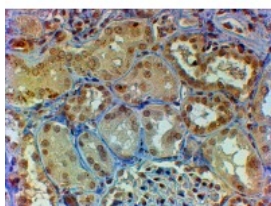


## MYB Antibody

CATALOG NUMBER: 45-922



Western Blot (xug/ml) staining of Human Colon lysate (35ug protein in RIPA buffer). Primary incubation was 1 hour. Detected by chemiluminescence.



Immunohistochemistry (2ug/ml) staining of paraffin embedded Human Kidney. Steamed antigen retrieval with citrate buffer pH 6, HRP-staining.

### Specifications

|                             |  |
|-----------------------------|--|
| <b>SPECIES REACTIVITY:</b>  | Human  |
| <b>TESTED APPLICATIONS:</b> | ELISA, IHC-P, WB   |
| <b>APPLICATIONS:</b>        | ELISA: antibody detection limit dilution 1:1000. Western Blot: Approx 70kDa band observed in Human Colon lysates (calculated MW of 72.3kDa according to NP_005366.2). Recommended concentration: 0.5-2ug/ml. Immunohistochemistry: In paraffin embedded Kidney shows nuclear staining in all cells. Recommended concentration, 2-4ug/ml. |
| <b>POSITIVE CONTROL:</b>    | 1) Cat. No. 1306 - Human Spleen Tissue Lysate  |
| <b>SPECIFICITY:</b>         | This antibody is expected to recognize isoforms 1-7 only (Numbering from NCBI RefSeq). (NP_001123645.1; NP_005366.2; NP_001123644.1; NP_001155128.1; NP_001155129.1; NP_001155130.1; NP_001155131.1)   |
| <b>IMMUNOGEN:</b>           | MYB antibody was raised against a 14 amino acid synthetic peptide near the internal region of MYB.   |
| <b>HOST SPECIES:</b>        | Goat   |

### Properties

|                            |  |
|----------------------------|--|
| <b>PURIFICATION:</b>       | MYB antibody was purified from goat serum by ammonium sulphate precipitation followed by antigen affinity chromatography using the immunizing peptide. |
| <b>PHYSICAL STATE:</b>     | Liquid   |
| <b>BUFFER:</b>             | MYB antibody is supplied in Tris saline, 0.02% sodium azide, pH 7.3 with 0.5% bovine serum albumin.  |
| <b>CONCENTRATION:</b>      | 500 ug/mL  |
| <b>STORAGE CONDITIONS:</b> | Aliquot and store at -20°C. Minimize freezing and thawing.   |
| <b>CLONALITY:</b>          | Polyclonal   |
| <b>CONJUGATE:</b>          | Unconjugated   |

### Additional Info

|                         |  |
|-------------------------|--|
| <b>ALTERNATE NAMES:</b> | v-myb myeloblastosis viral oncogene homolog (avian), c-myb, c-myb_CDS, efg, Avian myeloblastosis viral (v-myb) oncogene homolog, c-myb protein (140 AA), c-myb10A_CDS, c-myb13A_CDS, c-myb14A_CDS, c-myb8B_CDS, v-myb avian myeloblastosis viral oncogene homolog, v-myb myeloblastosis viral oncogene |
|-------------------------|--|

|                         |               |
|-------------------------|---------------|
|                         | homolog, Cmyb |
| <b>ACCESSION NO.:</b>   | NP_005366.2   |
| <b>PROTEIN GI NO.:</b>  | 46361980      |
| <b>OFFICIAL SYMBOL:</b> | MYB           |
| <b>GENE ID:</b>         | 4602          |

### Background

**REFERENCES:** 1) Clappier E, Cuccuini W, Kalota A, Crinquette A, Cayuela JM, Dik WA, Langerak AW, Montpellier B, Nadel B, Walrafen P, Delattre O, Aurias A, Leblanc T, Dombret H, Gewirtz AM, Baruchel A, Sigaux F, Soulier J. The C-MYB locus is involved in chromosomal translocation and genomic duplications in human T-cell acute leukemia (T-ALL) - the translocation defining a new T-ALL subtype in very young children. Blood. 2007 Apr 23;

FOR RESEARCH USE ONLY

December 13, 2016