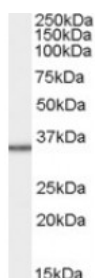




MRPL3 Antibody

CATALOG NUMBER: 45-904



Western Blot staining (1ug/ml) of HepG2 cell lysate (RIPA buffer, 35ug total protein per lane). Primary incubated for 1 hour. Detected by western blot using chemiluminescence.

Specifications

SPECIES REACTIVITY:	Human
TESTED APPLICATIONS:	ELISA, WB
APPLICATIONS:	ELISA: antibody detection limit dilution 1:32000. Western Blot: Approx 35kDa band observed in lysates of cell line HepG2 (calculated MW of 38.6kDa according to NP_009139.1). Recommended concentration: 1-3ug/ml.
POSITIVE CONTROL:	1) Cat. No. 1211 - HepG2 Cell Lysate
IMMUNOGEN:	MRPL3 antibody was raised against a 13 amino acid synthetic peptide near the C-Terminus of MRPL3.
HOST SPECIES:	Goat

Properties

PURIFICATION:	MRPL3 antibody was purified from goat serum by ammonium sulphate precipitation followed by antigen affinity chromatography using the immunizing peptide.
PHYSICAL STATE:	Liquid
BUFFER:	MRPL3 antibody is supplied in Tris saline, 0.02% sodium azide, pH 7.3 with 0.5% bovine serum albumin.
CONCENTRATION:	500 ug/mL
STORAGE CONDITIONS:	Aliquot and store at -20°C. Minimize freezing and thawing.
CLONALITY:	Polyclonal
CONJUGATE:	Unconjugated

Additional Info

ALTERNATE NAMES:	MRPL3, mitochondrial ribosomal protein L3, MRL3, RPML3, ribosomal protein, mitochondrial, L3, mitochondrial 60S ribosomal protein L3
ACCESSION NO.:	NP_009139.1
PROTEIN GI NO.:	6005862
OFFICIAL SYMBOL:	MRPL3

GENE ID: 11222

Background

REFERENCES: 1) Ou JH, Yen TS, Wang YF, Kam WK, Rutter WJ. Cloning and characterization of a human ribosomal protein gene with enhanced expression in fetal and neoplastic cells. Nucleic Acids Res. 1987 Nov 11;15(21):8919-34.

FOR RESEARCH USE ONLY

December 13, 2016