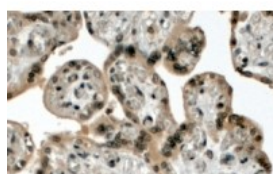


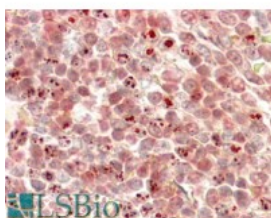


MLL2 Antibody

CATALOG NUMBER: 45-890



Immunohistochemistry (4ug/ml) staining of paraffin embedded Human Placenta. Steamed antigen retrieval with citrate buffer pH 6, HRP-staining.



Immunohistochemistry (3.8ug/ml) staining of paraffin embedded Human Liver. Steamed antigen retrieval with citrate buffer pH 6, HRP-staining.

Specifications

SPECIES REACTIVITY:	Human
TESTED APPLICATIONS:	ELISA, IHC-P
APPLICATIONS:	ELISA: antibody detection limit dilution 1:16000. Western Blot: Preliminary experiments gave bands at approx 75kDa and 25kDa in lysates of cell line K562 after 0.1ug/ml antibody staining. Please note that currently we cannot find an explanation in the literature for the bands we observe given the calcul Immunohistochemistry: In paraffin embedded Human Placenta shows nuclear staining in the trophoblasts . Similar nuclear patches are observed in Human Liver. Recommended concentration, 4-8ug/ml.
SPECIFICITY:	The immunizing peptide was designed from NP_003473.1. Since then the sequence has changed in the databases and currently differs at two locations in NP_003473.3.
IMMUNOGEN:	MLL2 antibody was raised against a 13 amino acid synthetic peptide near the N-Terminus of MLL2.
HOST SPECIES:	Goat

Properties

PURIFICATION:	MLL2 antibody was purified from goat serum by ammonium sulphate precipitation followed by antigen affinity chromatography using the immunizing peptide.
PHYSICAL STATE:	Liquid
BUFFER:	MLL2 antibody is supplied in Tris saline, 0.02% sodium azide, pH 7.3 with 0.5% bovine serum albumin.
CONCENTRATION:	500 ug/mL
STORAGE CONDITIONS:	Aliquot and store at -20°C. Minimize freezing and thawing.
CLONALITY:	Polyclonal
CONJUGATE:	Unconjugated

Additional Info

ALTERNATE NAMES:	MLL2, myeloid/lymphoid or mixed-lineage leukemia 2, ALR, ALL1-related gene, MLL2, MLL4
ACCESSION NO.:	NP_003473.1
PROTEIN GI NO.:	4505197

OFFICIAL SYMBOL: MLL2

GENE ID: 8085

Background

REFERENCES: 1) Prasad R, Zhadanov AB, Sedkov Y, Bulrich F, Druck T, Rallapalli R, Yano T, Alder H, Croce CM, Huebner K, Mazo A, Canaani E. Structure and expression pattern of human ALR, a novel gene with strong homology to ALL-1 involved in acute leukemia and to Drosophila trithorax. *Oncogene*. 1997 Jul 31;15(5):549-60.

FOR RESEARCH USE ONLY

December 13, 2016