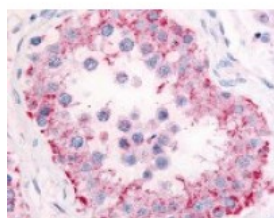




PDE11A Antibody

CATALOG NUMBER: 48-334



Immunohistochemistry staining of
PDE11A in testis tissue using PDE11A
Antibody.

Specifications

SPECIES REACTIVITY:	Bat, Bovine, Chicken, Gibbon, Gorilla, Hamster, Horse, Human, Monkey, Mouse, Pig, Rat, Zebrafish
TESTED APPLICATIONS:	IHC
APPLICATIONS:	PDE11A antibody can be used in ELISA, Western Blot, immunohistochemistry starting at 5 ug/mL, and immunofluorescence starting at 10 ug/mL.
USER NOTE:	Optimal dilutions for each application to be determined by the researcher.
SPECIFICITY:	BLAST analysis of the peptide immunogen showed no homology with other human proteins, except PDE6B (53%).
IMMUNOGEN:	PDE11A antibody was raised against a peptide located near the internal domain of PDE11A (Human).
HOST SPECIES:	Rabbit

Properties

PURIFICATION:	Immunoaffinity Chromatography
PHYSICAL STATE:	Liquid
BUFFER:	PBS, 0.1% sodium azide.
STORAGE CONDITIONS:	PDE11A antibody should be stored long term (months) at -80 °C and short term (days) at 4 °C. As with all antibodies avoid freeze/thaw cycles.
CLONALITY:	Polyclonal
CONJUGATE:	Unconjugated

Additional Info

ALTERNATE NAMES:	PDE11A, Pde11, PDE11A4, PDE11A1, PPNAD2, PDE11A2, PDE11A3, Phosphodiesterase 11A
ACCESSION NO.:	Q9HCR9
PROTEIN GI NO.:	296439264
OFFICIAL SYMBOL:	PDE11A
GENE ID:	50940

Background

BACKGROUND: Phosphodiesterase 11A is a cAMP/cGMP dual-specific phosphodiesterase. PDE11A activity is inhibited by IBMX, as well as zaprinast and dipyridamole. At least four isoforms have been identified which carry distinct GAF sequences in the N-terminal regions. PDE11A2 contains an additional 86 amino acids at the N-terminus. PDE11A3 contains an additional 108 N-terminal amino acids compared to PDE11A2. PDE11A4 is the longest isoform.

FOR RESEARCH USE ONLY

December 13, 2016